

A low-angle, upward-looking photograph of several modern skyscrapers. The buildings feature glass facades and curved architectural elements, set against a clear, bright blue sky. The perspective creates a sense of height and scale.

# 2 AQUAFLOW<sup>TM</sup> hr SERVICES





# introduction

24hr Aquaflow Services is a drainage and plumbing company, set up to offer a variety of maintenance and reactive call outs, at the highest possible standard, 24 hours a day 7 days a week.

We are a London based company, covering all areas, within London and the south east.

Our telephone lines are manned 24 hours a day, with an up to 4-hour response time, to all reactive callouts placed.

All our vehicles have a tracking system installed, so we can communicate with all clients, providing an accurate ETA.

All our engineers are highly trained within their fields of expertise. They are DBS checked and carry company ID cards.

We supply all our clients with PDF Job report cards, on completion of all works. These include photos taken during works. These reports can also be accessed real-time, through our client on-line portal.

If you would like more information regarding our services, please do not hesitate to contact us.



# drainage

We offer a drainage maintenance programme to all our clients, working to their specifications or we can advise a custom programme to suit their specific requirements.

# maintenance

# project

# management

We understand that each property requires a different approach to maintaining the drainage system.

Therefore, we carry out site inspections before providing a quotation and scope of works, pre-start meetings and an after-care meeting, if required.

We pride ourselves on the quality of our work and attention to detail on each job, making sure we deliver the highest possible standard for our clients.

After each maintenance visit, we provide a full detailed report, with photos of works carried out, along with quotations for any further works required / recommended after each visit.

We can also supply each client with log-in details to our dedicated online portal, so the reports for all works at the client's properties can be viewed, anytime, anywhere.

If you are interested in our maintenance programmes and would like more information, please do not hesitate to contact us.





# reactive callouts

We offer all our clients a 24 hour, 7 days a week reactive callout service. All our phones are manned 24 hours a day by a member of our staff.

We pride ourselves on reacting to each emergency callout within 4 hours of receiving each initial callout.

Our helpdesk will keep you informed from the moment they receive your callout until completion of works, following up with PDF job cards and photos of works carried out.

For clients who are responsible for several sites, we can also offer you login details to our online client portal. Here you can access all completed jobcards and photos of works carried out, at each of your sites, 24 hours a day.

If you would like more information on how we can help you, please do not hesitate to contact us.

# high pressure water jetting

All our drainage vans are equipped with the latest high-pressure water jetting units, which have been installed internally to each vehicle.

All units can reach up to 4000 PSI, giving us the ability to clear and clean all pipework ranging from 50mm through to 225mm in size.

If you would like more information about our high-pressure jetting service, please do not hesitate to contact us.







# electro- mechanical machining

All our drainage vans are equipped with the latest electro-mechanical machining equipment.

We are currently working with Spartan and Picote mechanical machines, which can clear and clean any drainage pipework ranging from

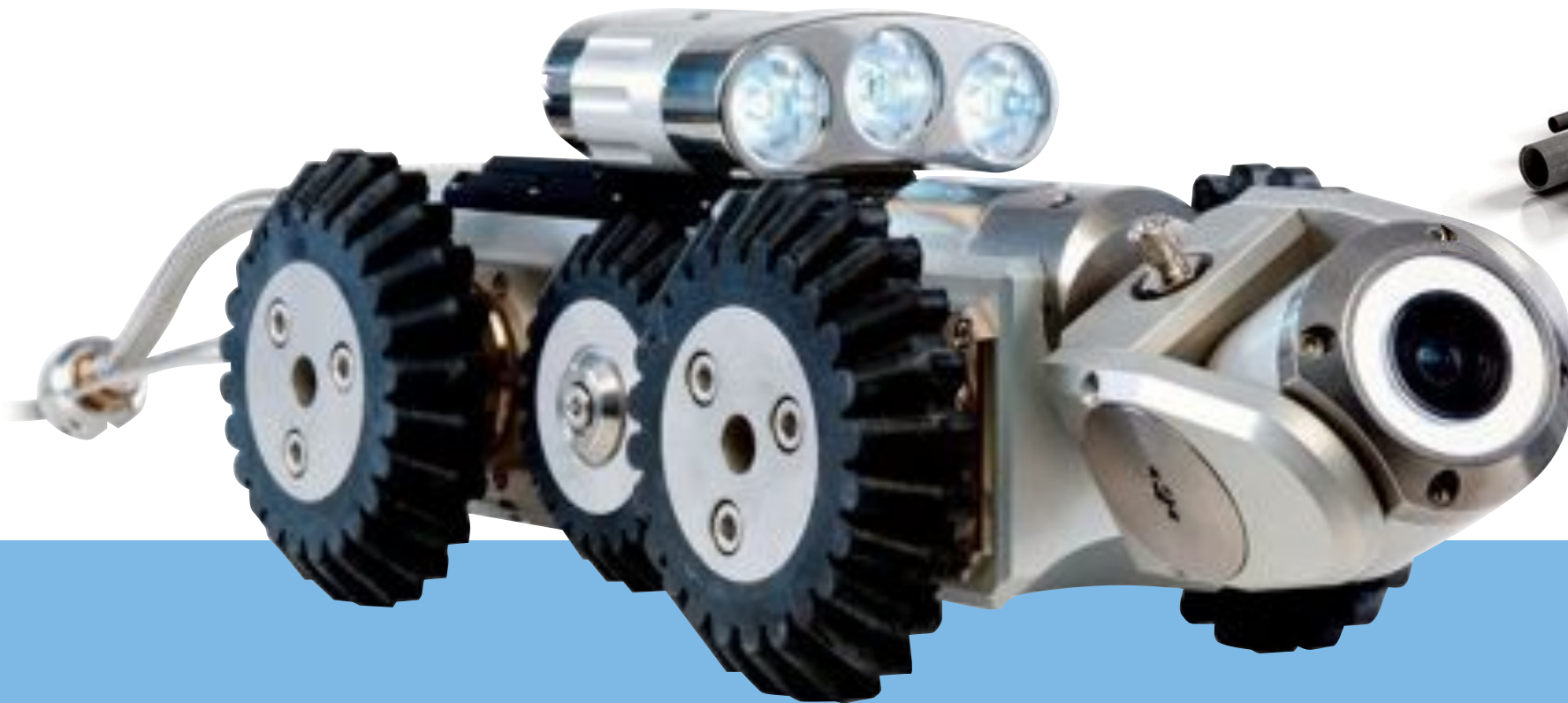
32mm through to 300mm in size.

These machines are used where high-pressure water jet is not able to be used.

We have many years' experience with these machines and can remove stubborn scale build up, through to concrete and collapsed resin

liners.

If you would like more information about our electro-mechanical machines and their capabilities, please do not hesitate to contact us.



We are also able to carry out larger diameter pipework, ranging from 150mm through to 600mm in size, at distances of up to 200 meters with our sewer crawler system.

We can supply you with a Wincan condition report, which is the industry leading reporting system, also with live footage on USB with a drainage layout drawing.

If you would like more information about our Drainage CCTV surveys, please do not hesitate to contact us.

# CCTV

All our drainage vans are supplied with the latest CCTV surveying units. Enabling us to survey and inspect drainage pipe work, ranging from 32mm through to 225mm in size.

# drainage surveys





When a pipe becomes broken, cracked, or displaced joints occur, the simplest and most cost-effective way of repair in many cases is to insert a resin based felt liner, or a patch repair, to the pipe.

We can insert resin liners, or patch repairs, ranging from 50mm through to 225mm in diameter.

Applications of each type of installation can be restricted, therefore a free of charge, no obligation site meeting will always be required, to allow us to provide our most competitive quotation.

If you would like more information about our drain-lining service, please do not hesitate to contact us.

# drain-lining





# vacuum/jetting tanker service

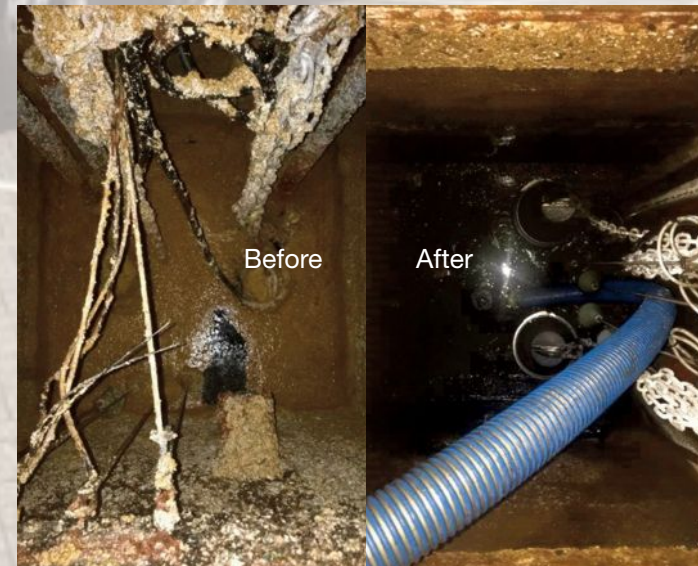
We are currently operating a 2000-gallon combination unit and a 3000-gallon vacuum suction unit, with up to 100 meters of auxiliary and vacuum hoses attached to vehicles.

We have the facility to remove and transfer all waste to registered disposal sites, under our waste carriers license. Once waste is disposed of, our clients will be issued with a duty of care certificate, in line with current environmental agency requirements.

We can clean and empty cesspits, oil separators, grease traps, pump chambers and road gullies.

With the use of the combination vacuum/jetting tanker units at 28gpm – 2500 PSI, we can carry out cleaning pipework from 100mm – 600mm in diameter.

If you would like more information about our vacuum / jetting tankers, please do not hesitate to contact us.





# excavation

# and

# ground works



We can carry out excavation works to remedy any drainage or water pipework which is leaking or broken.

We have a team of engineers and ground workers, who can locate and repair any broken or leaking underground pipework quickly and efficiently, cutting down out of service time at your property.

If you would like more information about our excavation and ground works services, please do not hesitate to contact us.



We offer a professional 24 hour, 7 days a week service, across London and the South East with a team of experienced and qualified plumbers.

Our highly qualified plumbers are ready to respond to any job, from emergencies through to surveys and inspections.


All our plumbing vans are equipped to deal with emergency reactive plumbing, offering the same service and response time as our drainage department.

If you would like more information about our plumbing services, please do not hesitate to contact us.

# plumbing







# 2 AQUAFLW<sup>TM</sup> hr SERVICES

[info@24hraquaflowservices.co.uk](mailto:info@24hraquaflowservices.co.uk)

0208 597 0030

[www.24hraquaflowservices.co.uk](http://www.24hraquaflowservices.co.uk)

